

# SNOWFLAKE CARNIVAL COSTUME

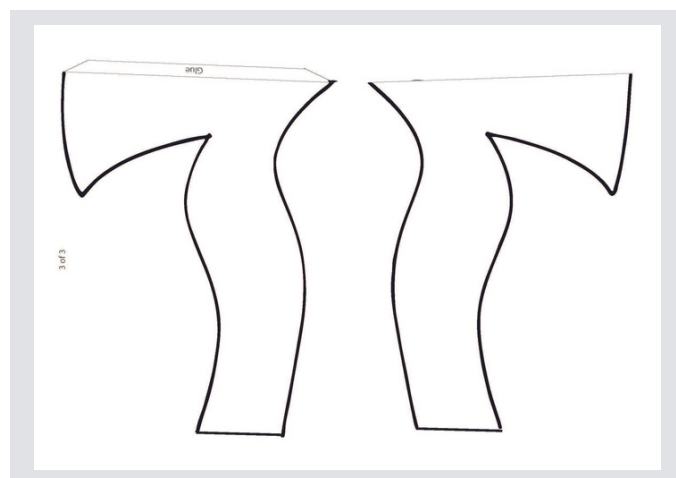
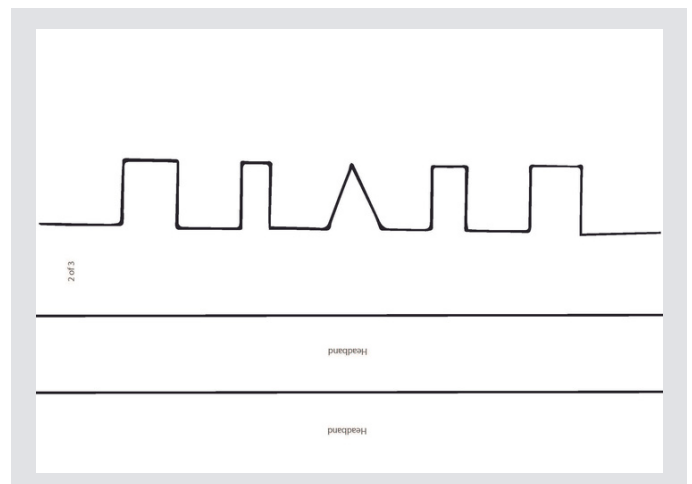
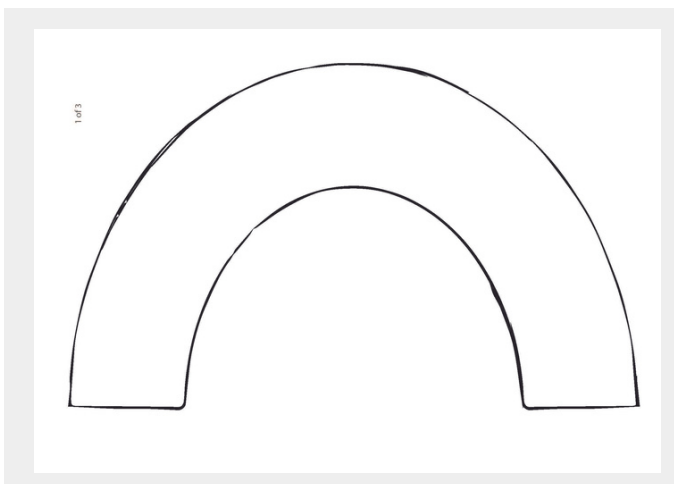


## You will need

- A4 paper (and preferably a printer)
- Scissors
- Glue
- Silver glitter, optional

## Step 1 - Create your headdress base

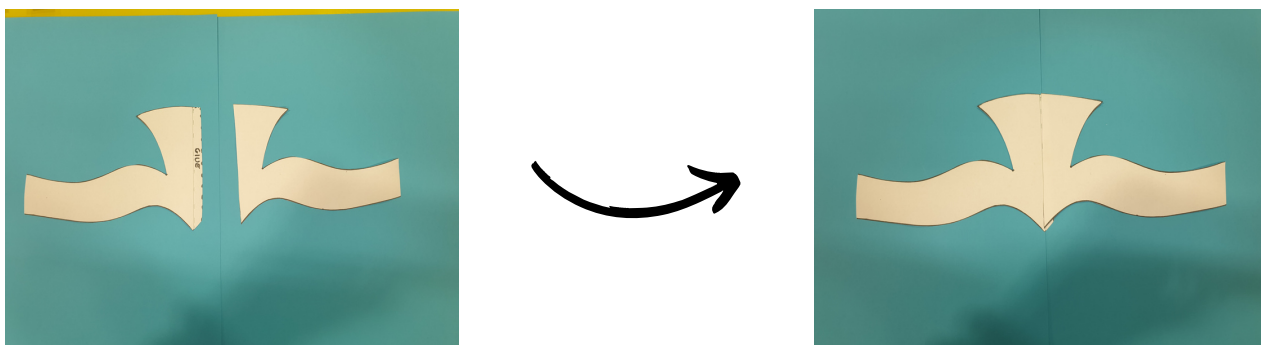
The first step for all the designs is to create the headdress base. You can do this with three pieces of A4. The templates for the base are on pages 11 -13 of this booklet. You will end up with 6 pieces in total for your base.



1. Cut out all the shapes making sure you cut along the black lines.

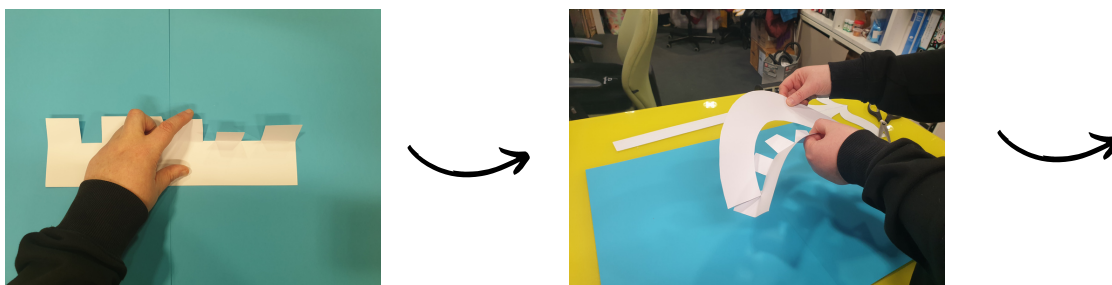


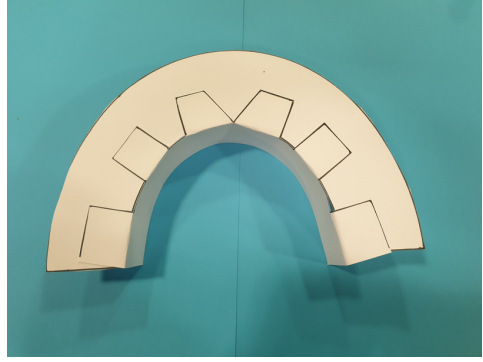
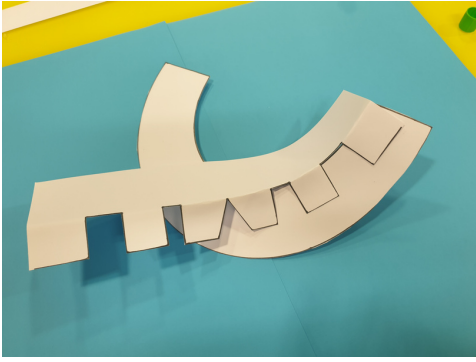
2. Glue together the centre piece.



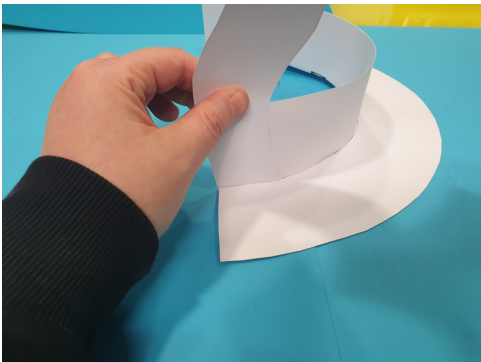
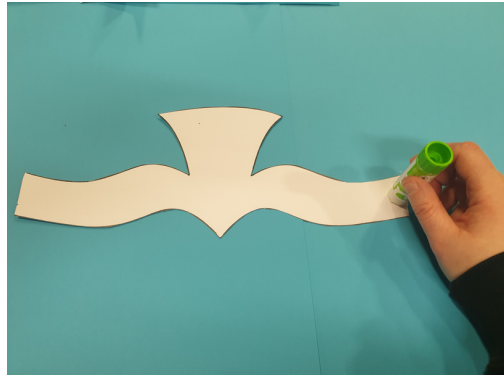
**Tip: Lay all the shapes with any remaining black lines facing down; this will help keep them out of sight on your finished headdress!**

3. Fold the tabs, add glue and attach them to the arch shape. Start from one end and make sure all the edges match up!

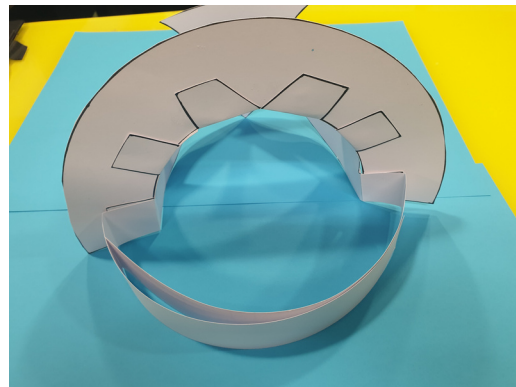
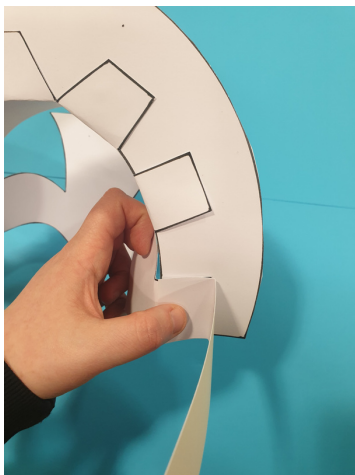
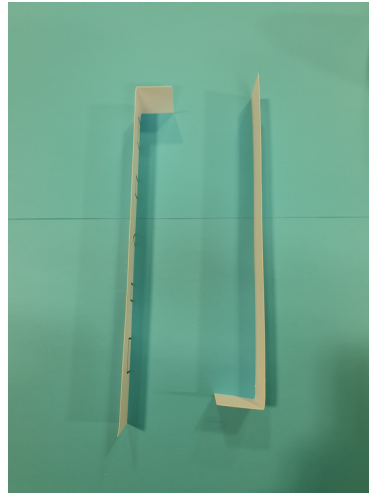
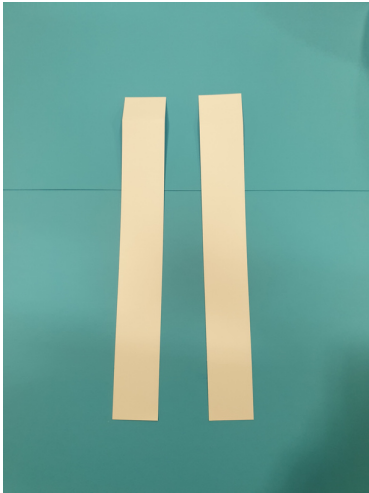




4. With the tab side facing down, glue the centre piece making sure you only glue the very ends and that the edges match up.



5. Now, it's time to add the headband. Make a 2-3 cm fold at each end of the headband strips. Glue or staple them to the back of the headdress, making sure the bottom edges match up. Measure around your head and glue or staple.



**Tip: If you glue the headbands on, wait until they dry before wearing your headdress!**

## Print out your snow-themed templates

If you haven't already, print out your templates (pages 20 & 22).

No printer? No problem! You can copy some of the designs or even make up your own designs.

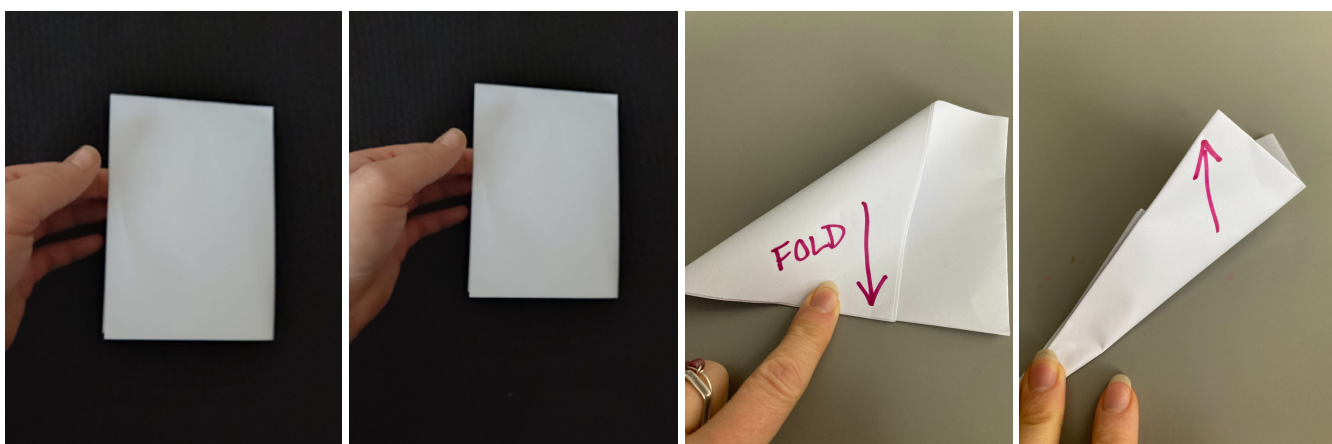
## Create some snowflakes

Now create your snowflakes. You can make a variety of different sizes, and you can use any colour paper you like.

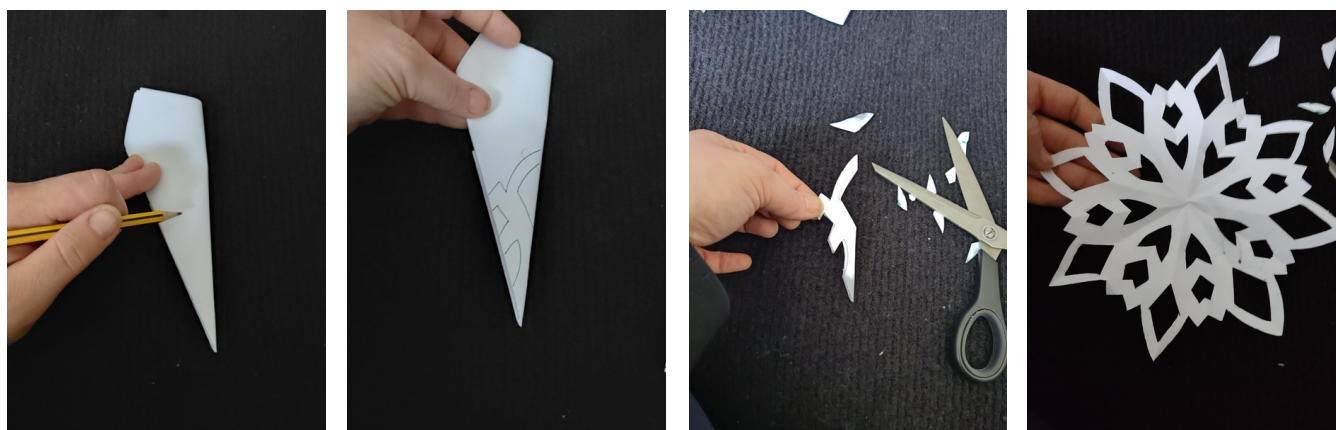
We recommend you use A4 paper. You will be folding it into sections (so that you have 16 creases) before you cut some shapes. Here is how:

First fold your paper in half. Then fold in half again.

Next fold the top corner on one side down to the bottom of the rectangle like in the picture below. Then fold again to create a flat cone shape.



Next you can draw some shapes on the cone shape, which you can then cut out to create your snowflakes. Check out our snowflake templates on page 22.



If you want to have quite a round snowflake shape then you can first cut off the top triangle part of the cone and then snip shapes into the top too. When you have made your snowflakes, you can choose to add a bit of glitter to them to make them sparkle!

## For the collar base:

Now its the fun part, decorating your headdress base with the print out shapes and snowflakes that you have made. You can be as creative as you like here, but it is a good idea to stick snowflakes at different levels on the headdress to create height.

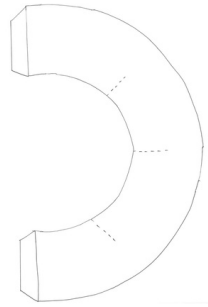
In the example below we have also added some blue stars and curled some icicle shapes (find templates for these on page 20 & 21) to the side.



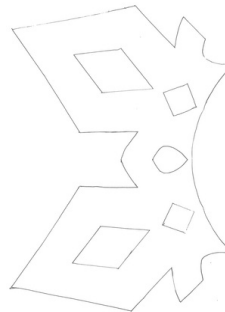
## Create your snowflake collar

Here is a really great carnival collar which you can make, which is designed to look like a big snowflake! It is simple to make. You can either print out the templates on pages 14 - 19 of the workbook, or copy the shapes below on to 6 pieces of paper.

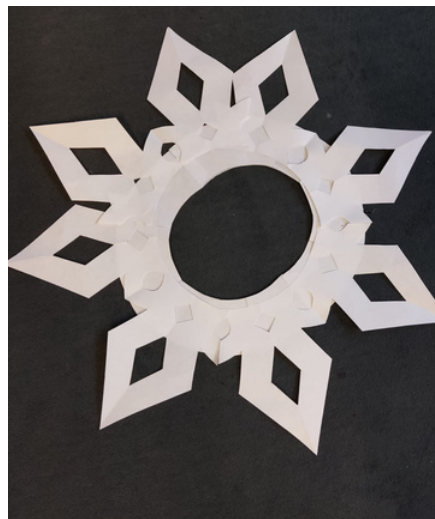
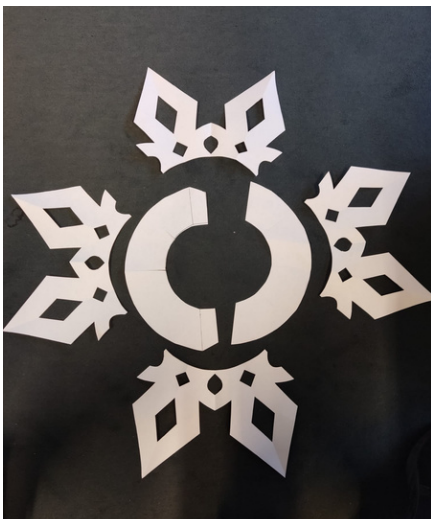
You need 2 of this shape:



You need 4 of this shape:



Once you have your 6 pieces of A4 paper which will make up the collar, you can cut the shapes out. You will have 6 shapes as you see in the picture below. For your second semi-circle piece you can cut the two tabs off. You can then glue it all together.





## Your finished carnival snowflake costume!

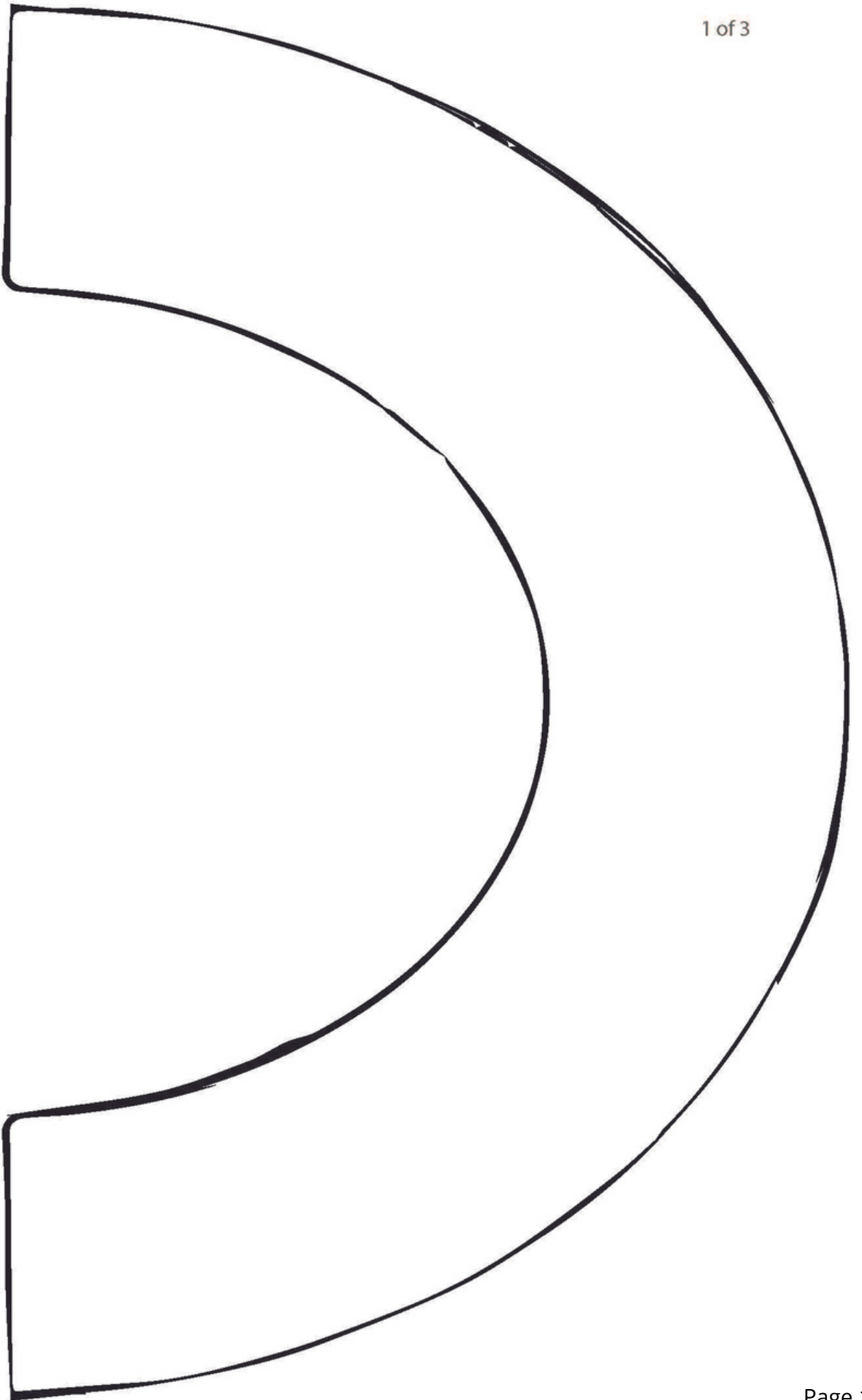
Why not add some extra snowflakes to your collar for a wintery feel or make it sparkle with glitter!



# SNOWFLAKE CARNIVAL COSTUME TEMPLATES



UK  
CENTRE FOR  
CARNIVALARTS



Headband

Headband

2 of 3

